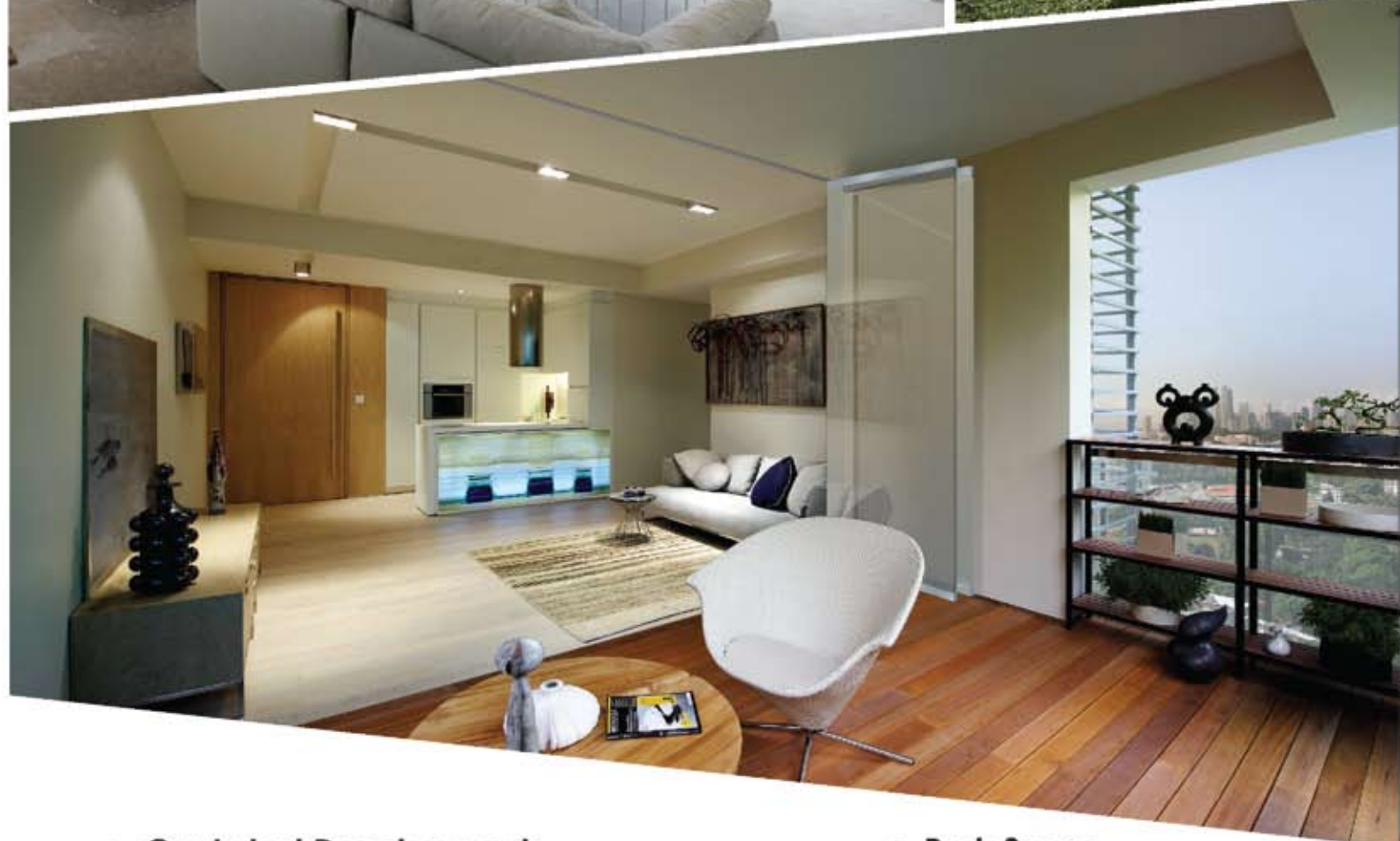


the SDB circle

August 2010

PP14823/12/2010(026191)



- **Our Latest Developments**

received overwhelming response
during previews

- **Park Seven**

receives
International Recognition

SDB ACHIEVES INTERNATIONAL RECOGNITION

Park Seven, our flagship development at KLCC and the Best High Rise Residential development awarded by the FIABCI Malaysia Property Awards 2009 had once again done us proud in the property awards arena. Several awards garnered by Park Seven for year 2010 include the Best High Rise Development in the Asia Pacific Property Award in association with Bloomberg Television; the SIA (Singapore Institute of Architects) Design Award and the Best High Rise Residential category for FIABCI Prix d'Excellence Awards.



SDB had also successfully launched two of its projects. In Singapore, *Gilstead Two* which is located near Newton Circus is SDB's second project in the neighbouring country. Here at home, SDB open its doors to the exclusive presentation of *20trees West*, limited edition bungalows facing the breathtaking view of the Melawati quartz ridge. Both projects received good response.

Another upcoming development in Kuala Lumpur which will be launched soon is *Dedaun*, limited edition luxury residences located in a private and quiet enclave, off Jalan Ampang. Do look out for this or log onto our website for more details.

We would like to also take this opportunity to thank all the lifestyle merchants of the SDB Card programme for their continued support towards SDB by offering special rates and discounts to all SDB homeowners.

In the meantime, do keep up with SDB's latest happenings by logging on to www.sdb.com.my.

Warm regards,

Ms Teh Lip Kim
Managing Director

NEW DEVELOPMENTS



With only 110 units, it speaks of understated elegance with remarkable space efficient layouts.

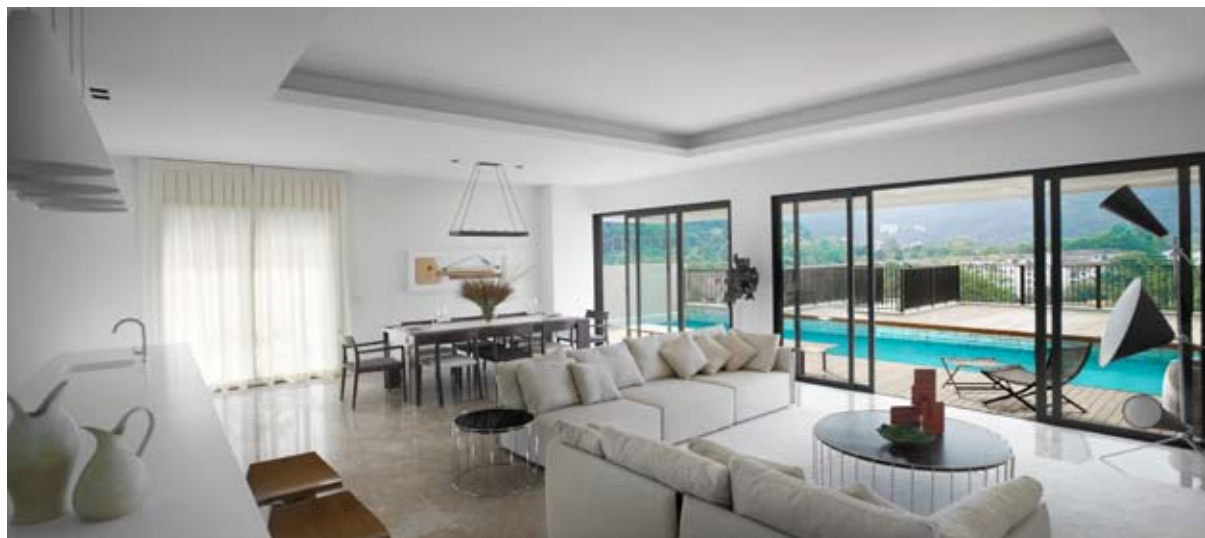
gilstead two

Off Dunearn Road, Bukit Timah,
District 11, Singapore

20trees·west

Taman Melawati, Kuala Lumpur

48 exceptional limited edition 3-storey bungalow residences, planned around your own private valley



* For more information, please call 603.2711 2288 or visit www.sdb.com.my

NEW LAUNCHES

OUTSTANDING RESPONSE in our recent previews

We had yet another two successful launches within these few months. Here, we showcase our two exclusive new developments, Gilstead Two and 20trees West.



gilstead two

Gilstead Two is our latest development in Singapore, located off Dunearn Road near Newton Circus.

We are very pleased to have received positive response during our soft launch on 29 May 2010, in which about 90% of the units released were taken up within the week, and 65% of the overall units were sold following that.

Standing 34 storeys high, Gilstead Two consists of 110 units with four units per floor. Gilstead Two units range from 775 sq ft to 904 sq ft, and each unit is fitted with its own unique and original artwork by one of UK's leading artists, David Hiscock. Shaped around the concept of rejuvenation and renewal, it features lush landscaping and various areas for meditation and relaxation, with a fully functional hydrotherapy pool.

20trees·west

Back in Kuala Lumpur, we had recently previewed our bungalow development in Melawati, 20trees West, which received overwhelming response.

About 75% were sold within a week following our preview on 16 July 2010. Majority of our buyers were existing SDB homeowners, who were delighted by our unique concept that embraces the surrounding greenery with designer lush landscaping, within a gated and guarded enclave.

20trees West is our second exclusive development in Melawati. It features a low-density area of only 48 bungalow homes within a 10.75 acres of freehold land. These 3-storey bungalow homes are available in five design types, inclusive of a private pool, walk-in wardrobes in the Master & Junior Master bedrooms, en-suite bathrooms, spacious layouts with double-volume ceilings, wide windows & sliding doors giving natural light & ventilation, and a beautifully appointed kitchen with designer cabinets and fully-fitted quality appliances.



WISMA SELANGOR DREDGING

Still The Preferred Office Address

Wisma Selangor Dredging (WSD) has always been the preferred office address, as it is located in the heart of the city centre, just a walk away from the Kuala Lumpur City Centre, home of the Petronas Twin Towers, Suria Shopping Centre, and the Petronas Philharmonic Theatre.

A sprawling low-density office complex with four blocks, WSD is surrounded by lush greenery and centered with a lovely fountain courtyard, where you can immerse in serene tranquillity. It is indeed more than just business, where patrons can enjoy their meals at the eateries facing the fountain courtyard, and embrace the natural greenery around them.

WSD also provides its tenants with:

- 24-hour security & CCTV surveillance
- Trained in-house maintenance personnel
- Long range proximity card for carpark & lift access
- Complimentary high speed WIFI broadband access at the Courtyard area
- Convenience store, Florist, Surau and Drivers room



For any enquiries, please call 603.2161 3377 or visit www.sdb.com.my

MEDIA VISIT @ Gilstead Two, Singapore

Some members of our local Media had the pleasure of visiting our development, Gilstead Two, in early June. They were given a briefing on the building and construction rules and regulations in Singapore, which is quite different from Malaysian procedures, and also a short talk on the Singapore property development market.



They were impressed with the featured fittings provided, like the unique artwork in each home, and adjustable kitchen counter top which converts into a dining table and makes the units very space efficient. They found that these features made the homes very interesting, and very unlike what was already offered in the Lion City.

OUR AWARD WINNING DEVELOPMENT

PARK SEVEN DOES IT AGAIN !

A Proud Achievement for SDB

We are pleased to announce that Park Seven has been recognized as one of Malaysia's outstanding developments.

In the year 2009, Park Seven was awarded with the FIABCI Malaysia Property Award for Best High Rise Residential Development.

In 2010, Park Seven was honoured with :

- The Highly Commended Award, at the Asia Pacific Residential Property Awards 2010, for the Best High Rise Development category;
- The Design Award by the Singapore Institute of Architect at the 10th SIA Architectural Design Awards 2010
- The Runner-up for Best Residential High Rise category in the FIABCI Prix d'Excellence Awards 2010.

Park Seven, SDB Properties' flagship development, perfectly exemplifies the philosophy of creating extraordinary living experiences. The first structurally earthquake resistant residential building in Kuala Lumpur, Park Seven is located right in the heart of the city, just metres away from the iconic Petronas Twin Towers.

Designed with understated luxury in mind, the 105 exclusive units are planned radially in two interconnected clusters for maximum external views, natural light and ventilation. The 270-degree panoramic view of the KL skyline and a double volume recreational deck, puts life's stresses at ease.

It is gratifying to receive these awards and to be recognised at an international level, especially when we began our foray into property development just six years ago.



Best Residential Development (High Rise)
FIABCI Malaysia Property Awards 2009



Runner-Up Best Residential (High Rise) Category
FIABCI Prix d'Excellence Awards 2010

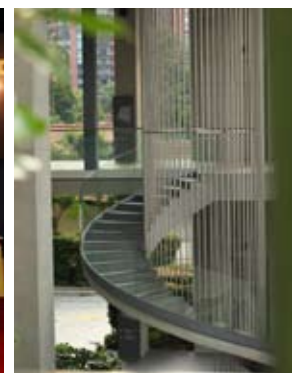
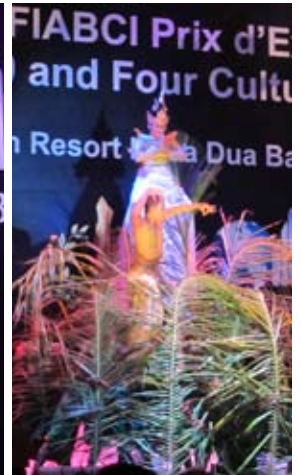


Highly Commended Best High Rise Development
Asia Pacific Residential Property Awards 2010



SIA Design Award
10th SIA Architectural Design Awards 2010

park seven



THE SDB CARD

The SDB Card is a personalized card which enables SDB homeowners to enjoy discounts and special rates at selected partner lifestyle merchants.

In this issue of the SDB Circle, partner merchants, Crown Relocations and Goodrich Global provide an introduction to their products and services.

Check out your SDB Card pack on the location and details of the exclusive discounts offered by all the lifestyle merchants under the programme.



▪ CROWN RELOCATIONS

Everything You Need For a Successful Relocation

Crown has been helping individuals and families relocate for over 45 years. With offices operating from over 250 locations in more than 52 countries, every move is backed by consistent, coordinated support made possible by a network of worldwide offices adhering to uniform standards of quality.

With offices in Kuala Lumpur, Penang and Johor, Crown Relocations Malaysia is part of the Crown Worldwide Group, a worldwide leader in global mobility, relocation services, information management and high value logistics.

Crown Worldwide Group's divisions are Crown Relocations, Crown Records Management, Crown Fine Arts, Crown Logistics and Crown wine Cellars.

Services provided by Crown:

- Fine Arts
- Household Shipment
- Online tracking
- Insurance
- Immigration Assistance
- Home and School Search
- Orientation Tours
- Intercultural Training

For more information, please visit www.crownrelo.com/malaysia.

other partner merchants

- Hotel Maya Kuala Lumpur
- Janine
- Gudang Damansara & Gudang Studio
- Xtra Furniture
- Mediaplex
- Jia
- Toto Sanitaryware
- E2 Saver

* For more information and enquiries, please call SDB Customer Services at 603.2171 2898.

• GOODRICH

Enlivening Your Cover Story

Creating beautiful living spaces has been Goodrich's mission for over 25 years. With products ranging from artistic wallcoverings, the enchanting and fabulous fabrics, and the safest and durable carpets to the toughest laminate floorings, Goodrich Global is ever ready to turn your home into a living masterpiece. Log on to www.goodrichglobal.com for more wall and floor furnishing ideas.

Here, Goodrich Global shares 11 reasons why wallcoverings is worth considering.

Fashion + Wallcoverings

1. Reflects best your personality and style in your residence or office.
2. Creates texture, imitates nature and even fabric on the wall.
3. Warms up a room with no architectural features and creates a cosy atmosphere.
4. Wallcoverings are economical, lasting and easy to maintain and some can even be scrubbed.
5. Adds character to a dull room.
6. Provides a certain air of quality and richness not found in uncovered walls.
7. Covers flaws on wall and protects wall surface.
8. Brightens a dark room.
9. Creates optical illusion making a small room bigger, narrow corridors wider, a big room cosier and changes the ordinary to the extraordinary.
10. An excellent fast fix for those selling their homes. Wallpaper offers a wide range of subtle patterns and colours to neutralize the interior to fit any style.
11. Adds value to your most important investment. Retail studies show that a tastefully decorated home can attain a 10 to 15 per cent increase in property rate.

For more information, please visit www.goodrichglobal.com.



SDB'S TEAMBUILDING at its best!

The Black Box Culinary Challenge and the Paintball Challenge were recently organised to strengthen and foster closer ties among all staff from different departments and at the same time break away from the daily routine of work to have some fun!

The gastronomically creative Black Box Culinary Challenge was initiated by the Human Resources & Administration department together with the Safety & Security department. The challenge was held at The Cooking House at Desa Sri Hartamas.

The teams were only revealed the cooking ingredients during the challenge and they will have to creatively cook up 1 appetizer and 2 main dishes with the provided ingredients. Each team must also name and do a presentation of each dish. Chef Collin of The Cooking House conducted the food tasting session of each team's dishes and provided each team with constructive feedback and suggestions.

After much deliberation, Ooi Yaw Jen's team consisting of Major Thor, Eti Haryati, Chin Kee Fook and Azmi was pronounced the overall winner. After the prize presentation ceremony, everyone had a chance to taste each team's delectable dishes.



Subsequently, the Operations (Finance, IT and Leasing) department joined hands with the Contracts department to organise the adventure driven Paintball Challenge at the Dusun Eco Resort, Bentong, Pahang.

A total of 14 staff took part in this strategic adrenalin pumping activity whereby the two teams had to fight against each other with the pump gun and paintballs to overcome each challenge and emerge as the winner.

It was a fun experience for all and at the end of the day, the winner was Mr Lew Shih Kee and his strong team members; Hsin Wei, Alex Low, Ooi Yaw Jen, Kok Yie Loon, Gunawan and Lim Yang Long.

YOUR HONEYMOON GETAWAY

the Maya way



Celebrate your first getaway holiday together as newlyweds or simply rekindle your memories with Hotel Maya's Honeymooner's Package.

Our package offers a 3D/2N accommodation, in a luxuriously appointed room with daily breakfast in bed, and a romantic set dinner for two at Still Waters. A bottle of sparkling wine accompanied with strawberries and cream and a bouquet of flowers for the lady will provide a warm welcome for your stay.

You will enjoy special services from our on-call floor butler, which includes a seductive flower drawn bath with essential oils, complimentary pressing of up to 5 pieces of garment upon arrival, and usage of the gym and indoor heated hydrotherapy pool at Anggun Spa.

You will also get to enjoy daily fruit platter, unlimited broadband internet access in the privacy of your room with WIFI access and unlimited free local calls (03 prefix land line only).

As the sun sets, you may choose to access the mini library at the picturesque Sky Lounge at Level 13, or just relax with a nite-cap, from 9.00pm – 11.00pm daily with free flow of coffee, tea and petit fours. An option for check-in as early as 7.00am and late check-out till 6.00pm may also be arranged with prior reservations and availability.

The Package is available until 31 Dec 2010. For reservations, please call +603.2711 8866, or visit www.hotelmaya.com.my.

FINE MALAY CUISINE

at Maya Brasserie

Feast your palates with the divine culinary dishes of fine Malay cuisine at Maya Brasserie. Enjoy age old recipes which are given a contemporary twist, yet retaining the traditional flavours.

Patrons can choose their main course from signature dishes such as *kelio scallop*, *rusuk kambing*, *sambal tiger prawn* and *kod masak belimbing*. In addition to that, the buffet offers delicacies of sashimi, sushi, salads and selections of various appetizers in the finest quality and consistency in taste. Traditional Malay desserts *tapai goreng*, *putu bamboo*, cakes and ice cream complement the existing dessert selection.

Maya Brasserie is located at Level 1, with a semi-private dining area for special functions and occasions. The restaurant is open daily from 6.30 am to 12.00 am.



We are having a special spread of delectable delights during the month of Ramadan. For reservations, please call +603.2711 8866 ext.258, or visit www.hotelmaya.com.my.

our brand promise
**Driving Excellence,
Building Lifelong Relationships**

our core values
**Passionate
Innovative
Results Oriented
Caring & Respectful**

for properties in Malaysia , please contact :

sdb properties sdn bhd

t + 603.2711 2288

w www.sdb.com.my

for properties in Singapore , please contact :

sdb asia pte ltd

t + 65.6238 2288

w www.sdb.com.sg

for hotel services , please contact :

hotel maya
KUALA LUMPUR

t + 603.2711 8866

reservation fax + 603.2711 2277

w www.hotelmaya.com.my

