

SqWhere



One Place.
Different Personalities.

Welcome to a vibrant development consisting of Retail Offices, SOVOs and Service Apartments, with artistic yet calming landscapes on different levels to provide you a series of life experiences.

Site Plan



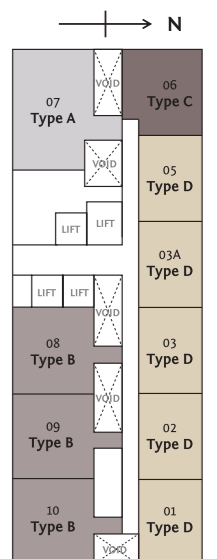
- 1 SOVO Lobby LG1
- 2 Service Apartment Lobby LG1
- 3 Garden SqWhere L8
- 4 Secret Passage L8
- 5 Garden Lounge L8
- 6 Hydrotherapy Pool L8
- 7 Lap Pool L8
- 8 Floating Gym L8a
- 9 Children's Pool L8
- 10 Children's Water Play Area / Children's Play Area L8
- 11 The Cube G
- 12 Retail SqWhere L1
- 13 Link Bridge to MRT L2

Block Plan

SOVO

	North (Sierras)						South (Retail SqWhere)			
LEVEL 39	SV39-01 D2	SV39-02 D4	SV39-03 D1	SV39-03A D6	SV39-05 D3	SV39-06 C3	SV39-07 A2	SV39-08 B4	SV39-09 B11	SV39-10 B6
LEVEL 38	SV38-01 D3	SV38-02 D1	SV38-03 D3	SV38-03A D8	SV38-05 D1	SV38-06 C1	SV38-07 A4	SV38-08 B2	SV38-09 B9	SV38-10 B5
LEVEL 37	SV37-01 D1	SV37-02 D3	SV37-03 D1	SV37-03A D6	SV37-05 D2	SV37-06 C2	SV37-07 A1	SV37-08 B1	SV37-09 B12	SV37-10 B7
LEVEL 36	SV36-01 D4	SV36-02 D1	SV36-03 D3	SV36-03A D7	SV36-05 D4	SV36-06 C3	SV36-07 A3	SV36-08 B3	SV36-09 B10	SV36-10 B5
LEVEL 35	SV35-01 D3	SV35-02 D4	SV35-03 D4	SV35-03A D8	SV35-05 D1	SV35-06 C1	SV35-07 A1	SV35-08 B1	SV35-09 B10	SV35-10 B6
LEVEL 33A	SV33A-01 D1	SV33A-02 D2	SV33A-03 D3	SV33A-03A D5	SV33A-05 D4	SV33A-06 C3	SV33A-07 A4	SV33A-08 B4	SV33A-09 B12	SV33A-10 B8
LEVEL 33	SV33-01 D2	SV33-02 D4	SV33-03 D1	SV33-03A D6	SV33-05 D3	SV33-06 C3	SV33-07 A2	SV33-08 B4	SV33-09 B11	SV33-10 B6
LEVEL 32	SV32-01 D3	SV32-02 D1	SV32-03 D3	SV32-03A D8	SV32-05 D1	SV32-06 C1	SV32-07 A4	SV32-08 B2	SV32-09 B9	SV32-10 B5
LEVEL 31	SV31-01 D1	SV31-02 D3	SV31-03 D1	SV31-03A D6	SV31-05 D2	SV31-06 C2	SV31-07 A1	SV31-08 B1	SV31-09 B12	SV31-10 B7
LEVEL 30	SV30-01 D4	SV30-02 D1	SV30-03 D2	SV30-03A D7	SV30-05 D4	SV30-06 C3	SV30-07 A3	SV30-08 B3	SV30-09 B10	SV30-10 B5
LEVEL 29	SV29-01 D3	SV29-02 D4	SV29-03 D4	SV29-03A D8	SV29-05 D1	SV29-06 C1	SV29-07 A1	SV29-08 B1	SV29-09 B10	SV29-10 B6
LEVEL 28	SV28-01 D1	SV28-02 D2	SV28-03 D3	SV28-03A D5	SV28-05 D4	SV28-06 C3	SV28-07 A4	SV28-08 B4	SV28-09 B12	SV28-10 B8
LEVEL 27	SV27-01 D2	SV27-02 D4	SV27-03 D1	SV27-03A D6	SV27-05 D3	SV27-06 C3	SV27-07 A2	SV27-08 B4	SV27-09 B11	SV27-10 B6
LEVEL 26	SV26-01 D3	SV26-02 D1	SV26-03 D3	SV26-03A D8	SV26-05 D1	SV26-06 C1	SV26-07 A4	SV26-08 B2	SV26-09 B9	SV26-10 B5
LEVEL 25	SV25-01 D3	SV25-02 D3	SV25-03 D1	Break Tank	SV25-05 D2	SV25-06 C2	SV25-07 A1	Break Tank		
LEVEL 23A	SV23A-01 D4	SV23A-02 D1	SV23A-03 D2	SV23A-05 D4	SV23A-06 C3	SV23A-07 A3				
LEVEL 23	SV23-01 D4	SV23-02 D4	SV23-03 D4	SV23-03A D8	SV23-05 D4	SV23-06 C1	SV23-07 A1	SV23-08 B1	SV23-09 B10	SV23-10 B6
LEVEL 22	SV22-01 D2	SV22-02 D2	SV22-03 D3	SV22-03A D5	SV22-05 D4	SV22-06 C3	SV22-07 A4	SV22-08 B4	SV22-09 B12	SV22-10 B8
LEVEL 21	SV21-01 D2	SV21-02 D4	SV21-03 D1	SV21-03A D6	SV21-05 D3	SV21-06 C3	SV21-07 A2	SV21-08 B4	SV21-09 B11	SV21-10 B6
LEVEL 20	SV20-01 D3	SV20-02 D1	SV20-03 D3	SV20-03A D8	SV20-05 D1	SV20-06 C1	SV20-07 A4	SV20-08 B2	SV20-09 B9	SV20-10 B5
LEVEL 19	SV19-01 D1	SV19-02 D3	SV19-03 D1	SV19-03A D6	SV19-05 D2	SV19-06 C2	SV19-07 A1	SV19-08 B1	SV19-09 B12	SV19-10 B7
LEVEL 18	SV18-01 D4	SV18-02 D1	SV18-03 D2	SV18-03A D7	SV18-05 D4	SV18-06 C3	SV18-07 A3	SV18-08 B3	SV18-09 B10	SV18-10 B5
LEVEL 17	SV17-01 D3	SV17-02 D4	SV17-03 D4	SV17-03A D8	SV17-05 D1	SV17-06 C1	SV17-07 A1	SV17-08 B1	SV17-09 B10	SV17-10 B6
LEVEL 16	SV16-01 D1	SV16-02 D2	SV16-03 D3	SV16-03A D5	SV16-05 D4	SV16-06 C3	SV16-07 A4	SV16-08 B4	SV16-09 B12	SV16-10 B8
LEVEL 15	SV15-01 D2	SV15-02 D4	SV15-03 D1	SV15-03A D6	SV15-05 D3	SV15-06 C3	SV15-07 A2	SV15-08 B4	SV15-09 B11	SV15-10 B6
LEVEL 13A	SV13A-01 D3	SV13A-02 D1	SV13A-03 D3	SV13A-03A D8	SV13A-05 D1	SV13A-06 C1	SV13A-07 A4	SV13A-08 B2	SV13A-09 B9	SV13A-10 B5
LEVEL 13	SV13-01 D1	SV13-02 D3	SV13-03 D1	SV13-03A D6	SV13-05 D4	SV13-06 C2	SV13-07 A1	SV13-08 B1	SV13-09 B12	SV13-10 B7
LEVEL 12	SV12-01 D4	SV12-02 D1	SV12-03 D2	SV12-03A D7	SV12-05 D4	SV12-06 C3	SV12-07 A3	SV12-08 B3	SV12-09 B10	SV12-10 B5
LEVEL 11	SV11-01 D3	SV11-02 D4	SV11-03 D4	SV11-03A D8	SV11-05 D1	SV11-06 C1	SV11-07 A1	SV11-08 B1	SV11-09 B10	SV11-10 B6
LEVEL 10	SV10-01 D1	SV10-02 D3	SV10-03 D3	SV10-03A D5	SV10-05 D4	SV10-06 C3	SV10-07 A4	SV10-08 B4	SV10-09 B12	SV10-10 B8
LEVEL 9	SV09-01 D2	SV09-02 D4	SV09-03 D1	SV09-03A D6	SV09-05 D3	SV09-06 C3	SV09-07 A2	SV09-08 B4	SV09-09 B11	SV09-10 B6
LEVEL 8	GARDEN LOUNGE									
LEVEL 7	CARPARK									
LEVEL 6	CARPARK									
LEVEL 5	CARPARK									
LEVEL 3A	RETAIL OFFICE									
LEVEL 3	RETAIL OFFICE									
LEVEL 2	RETAIL OFFICE									
LEVEL 1	RETAIL OFFICE									
GF	RETAIL OFFICE									
LG1	LOBBY									

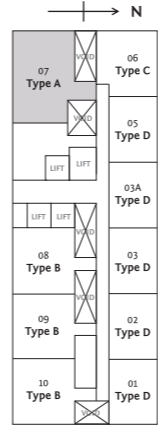
- Type A 1,044 sq ft 31
- Type B 764 sq ft 87
- Type C 678 sq ft 31
- Type D 549 sq ft 153



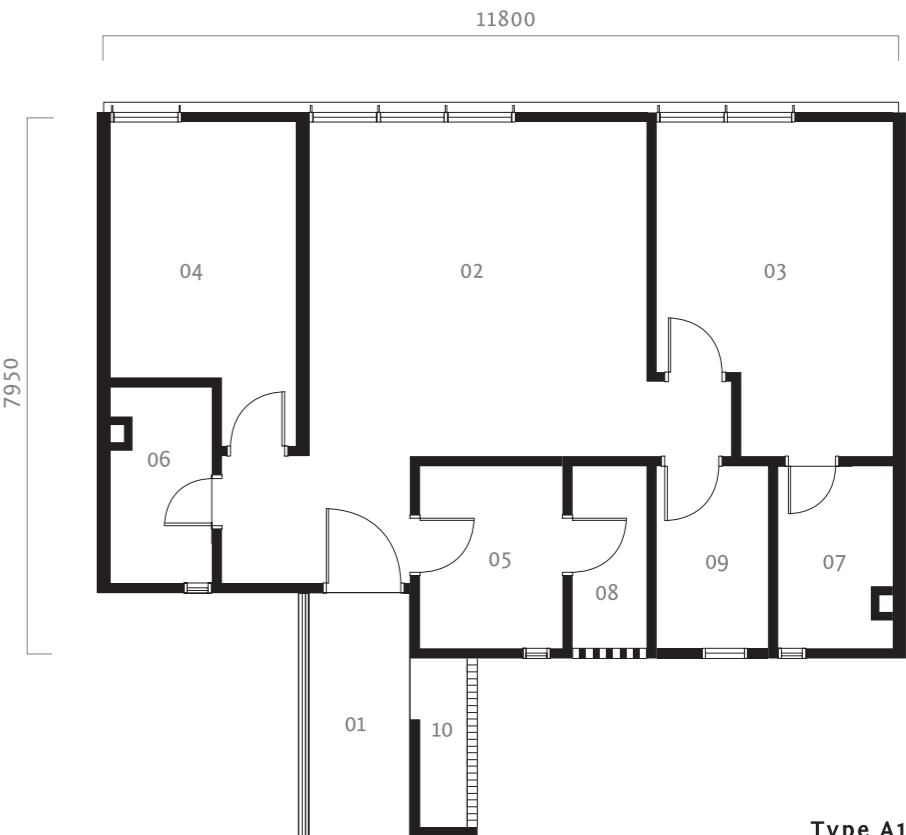


Type A

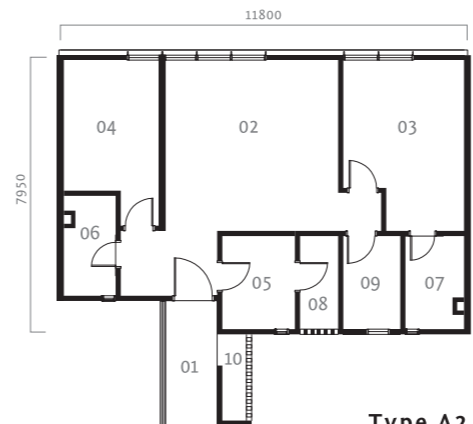
approx built-up
1,044 sq ft / 97 sm
unit 07



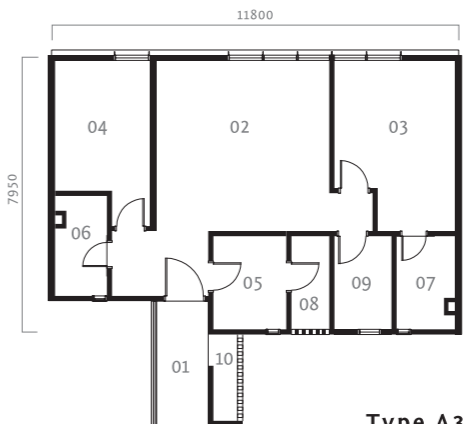
- 01 Entrance
- 02 Office
- 03 Meeting Room
- 04 Manager's Room
- 05 Pantry
- 06 Toilet 1
- 07 Toilet 2
- 08 Dry Yard
- 09 Utility
- 10 A/C Ledge



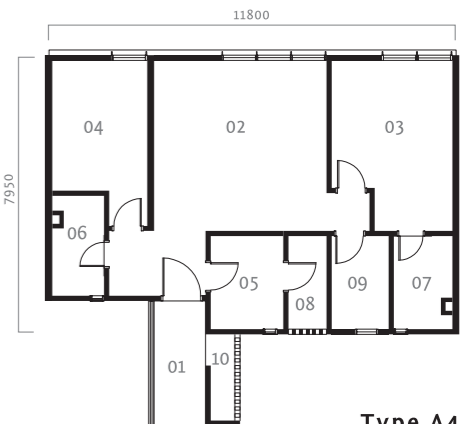
Type A1



Type A2



Type A3



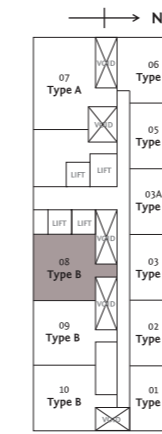
Type A4

Type A - Layouts above are identical except for location of windows.

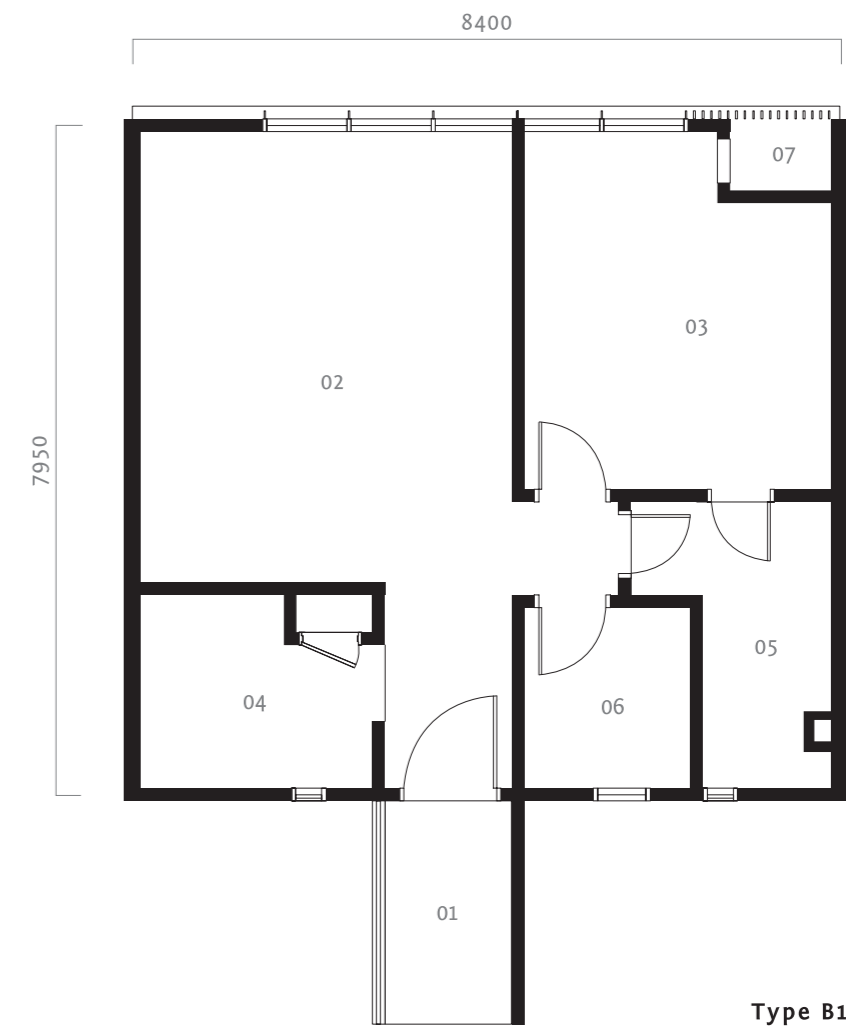


Type B

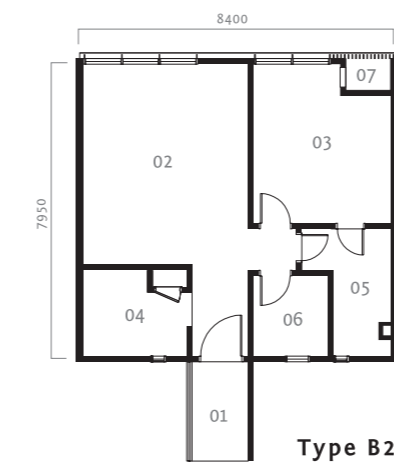
approx built-up
764 sq ft / 71 sm
unit 08



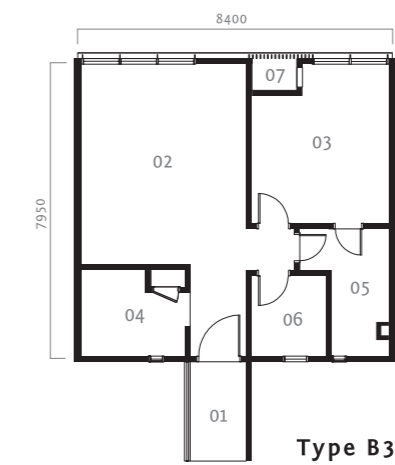
- 01 Entrance
- 02 Office
- 03 Meeting Room
- 04 Pantry
- 05 Toilet
- 06 Utility
- 07 A/C Ledge



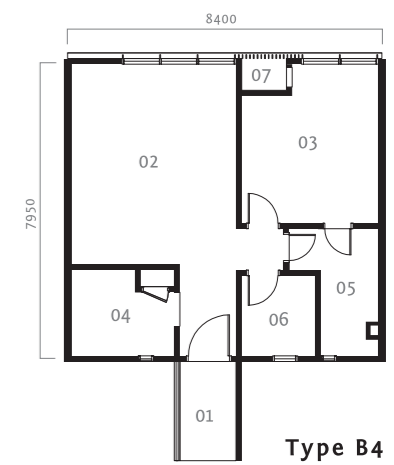
Type B1



Type B2



Type B3

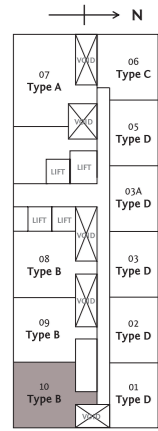


Type B4

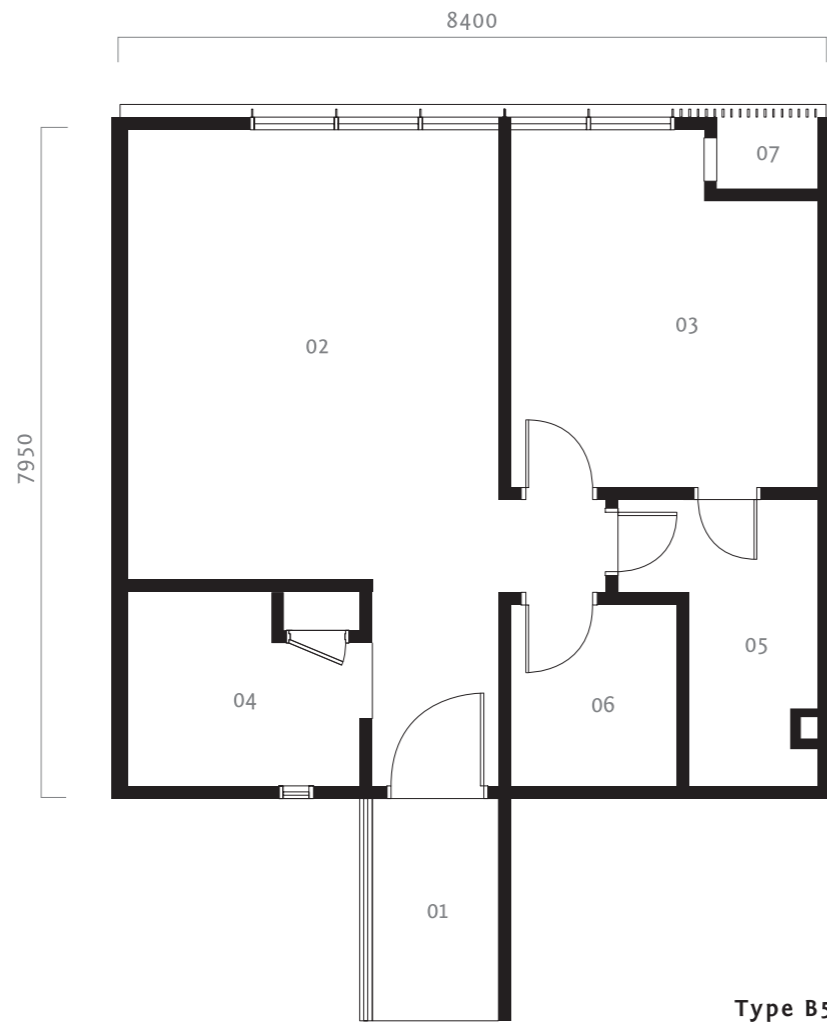
Type B - Layouts above are identical except for location of windows and A/C ledges.

Type B

approx built-up
764 sq ft / 71 sm
unit 10



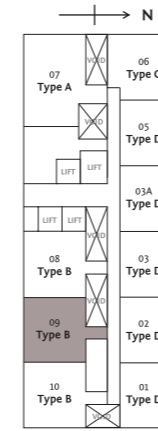
- 01 Entrance
- 02 Office
- 03 Meeting Room
- 04 Pantry
- 05 Toilet
- 06 Utility
- 07 A/C Ledge



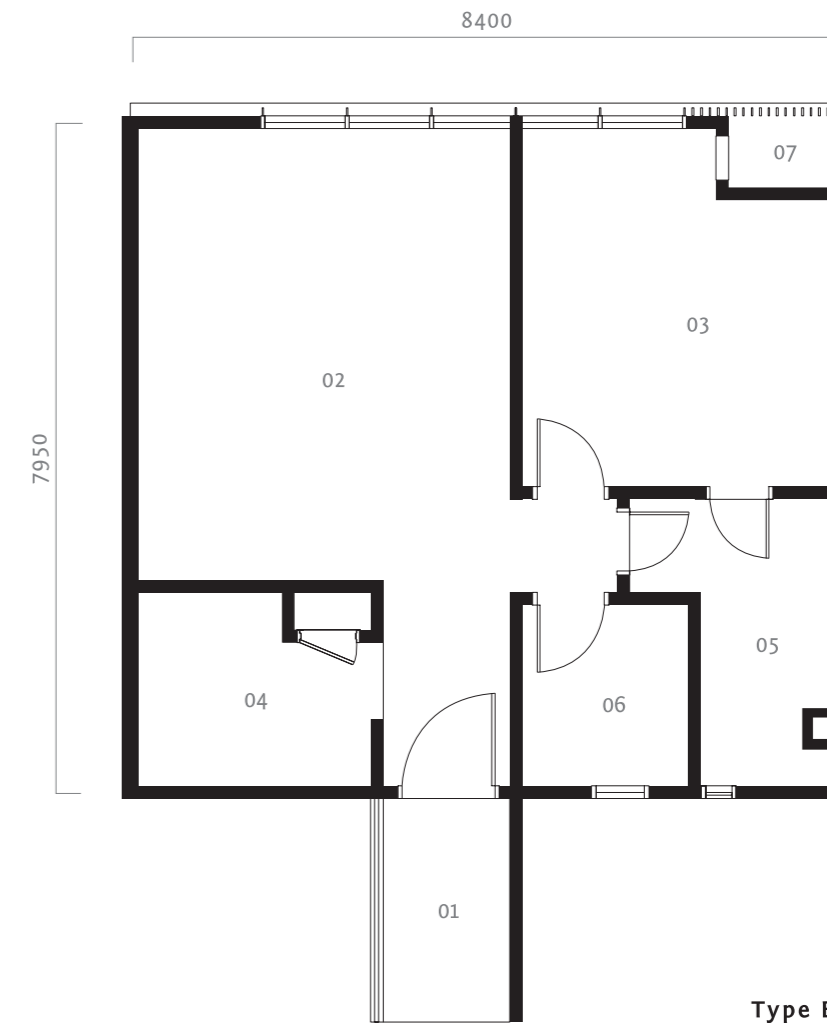
Type B5

Type B

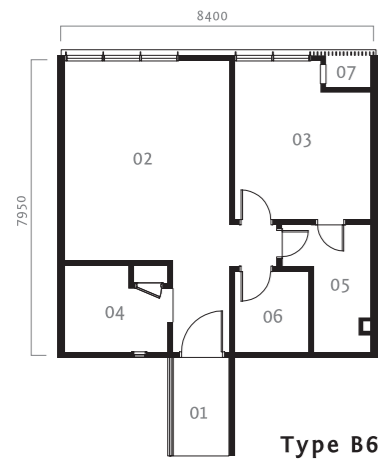
approx built-up
764 sq ft / 71 sm
unit 09



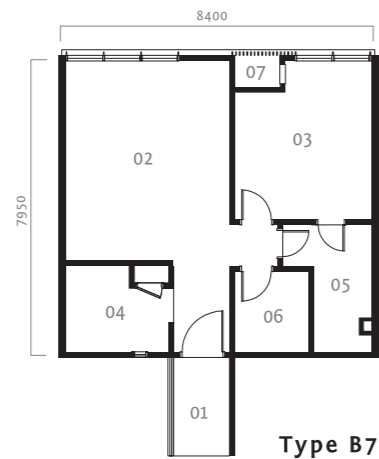
- 01 Entrance
- 02 Office
- 03 Meeting Room
- 04 Pantry
- 05 Toilet
- 06 Utility
- 07 A/C Ledge



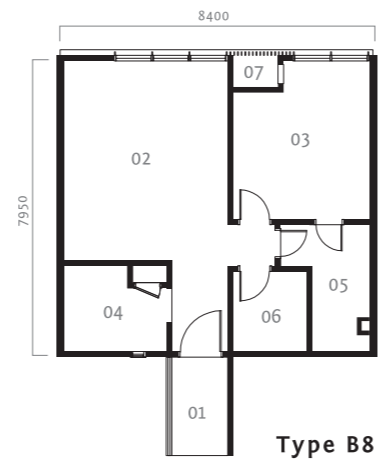
Type B9



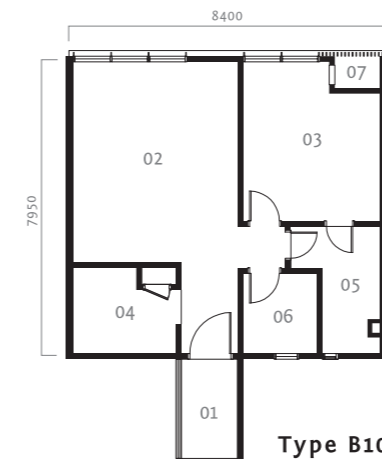
Type B6



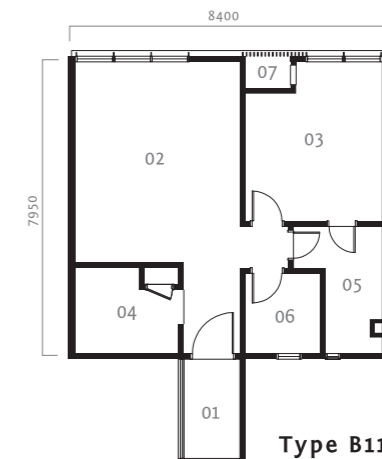
Type B7



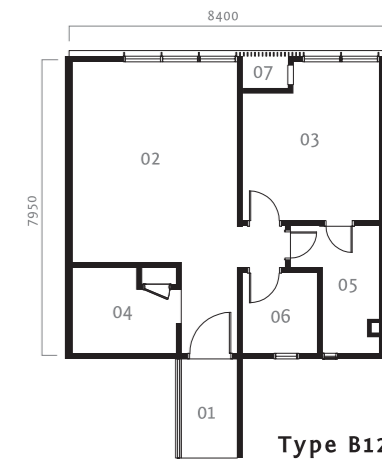
Type B8



Type B10



Type B11



Type B12

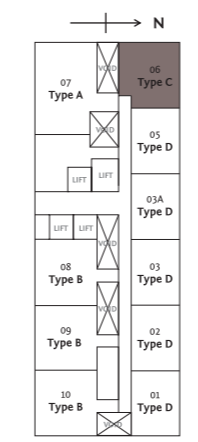
Type B - Layouts above are identical except for location of windows and A/C ledges.
Utility rooms and toilets have no windows.

Type B - Layouts above are identical except for location of windows and A/C ledges.
Pantry has no windows.

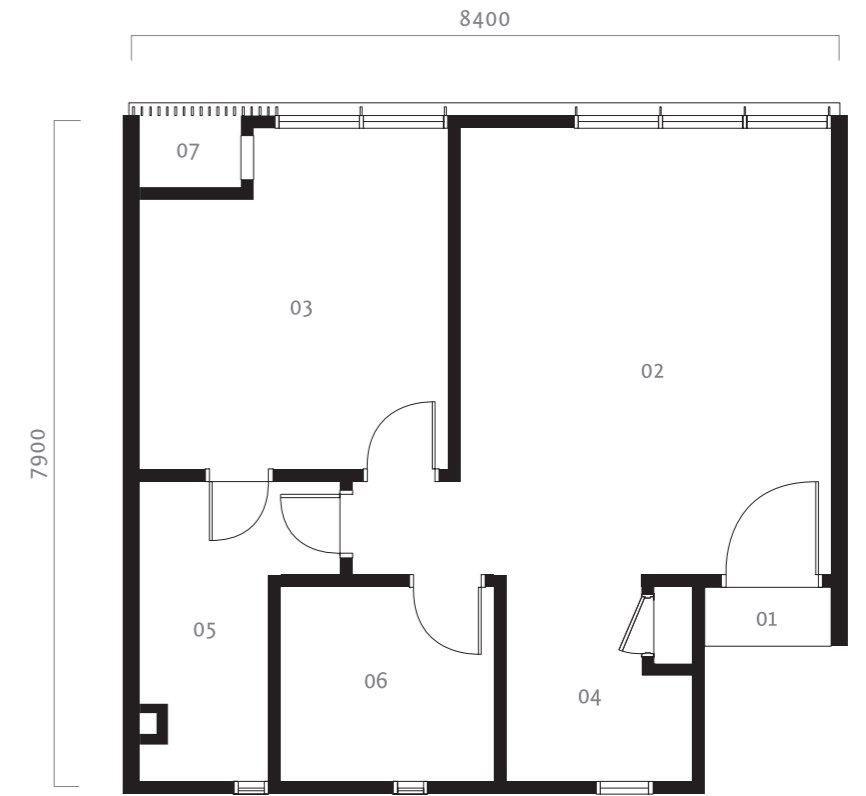


Type C

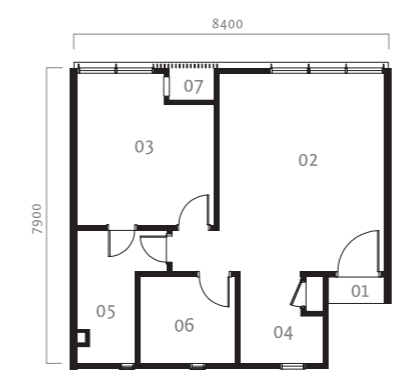
approx built-up
678 sq ft / 63 sm
unit 06



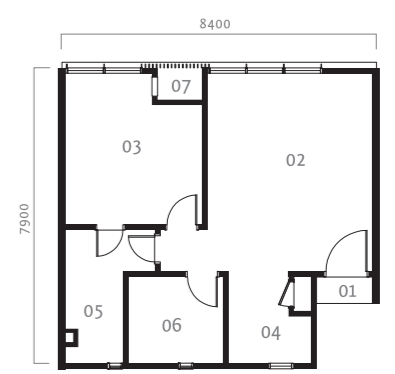
- 01 Entrance
- 02 Office
- 03 Meeting Room
- 04 Pantry
- 05 Toilet
- 06 Utility
- 07 A/C Ledge



Type C1



Type C2



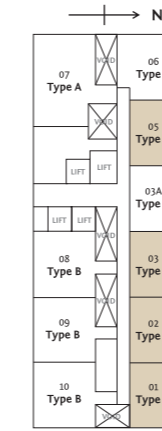
Type C3

Type C - Layouts above are identical except for location of windows and A/C ledges.

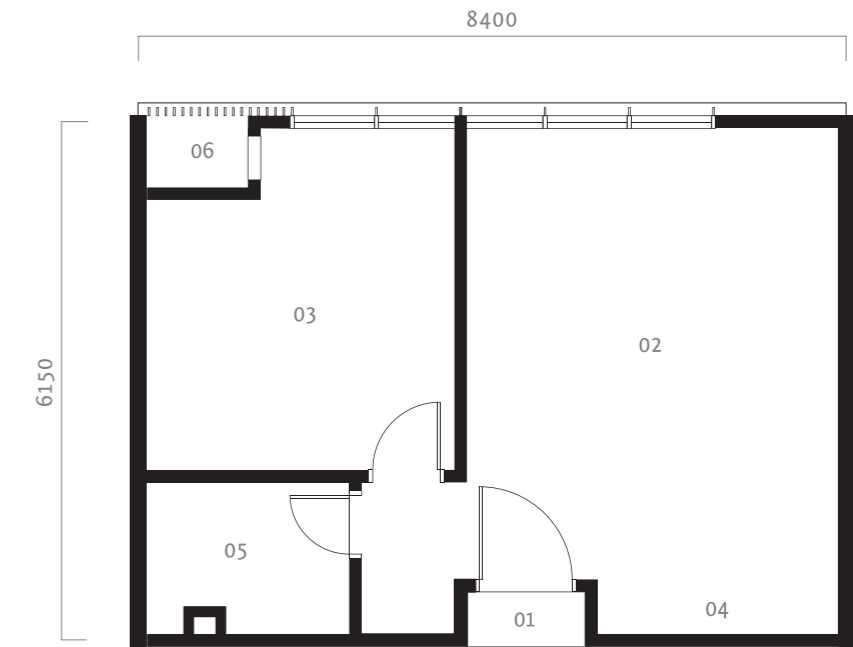


Type D

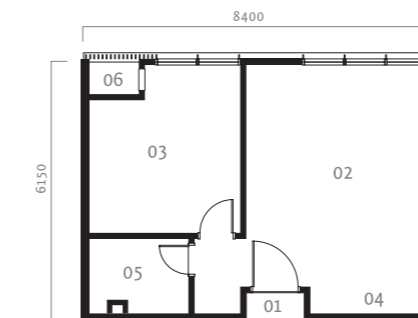
approx built-up
549 sq ft / 51 sm
unit 01, 02, 03 & 05



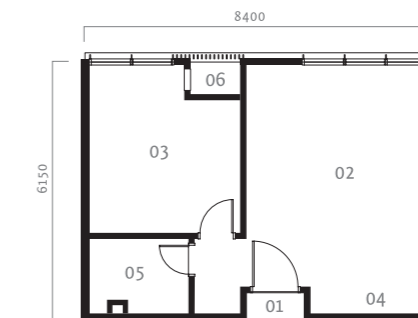
- 01 Entrance
- 02 Office
- 03 Meeting Room
- 04 Pantry
- 05 Toilet
- 06 A/C Ledge



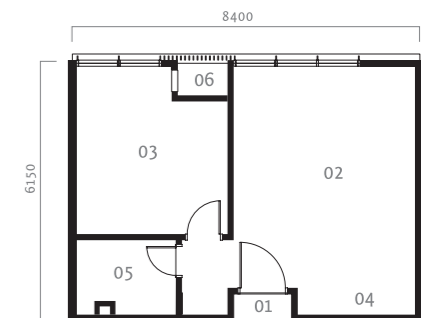
Type D1



Type D2



Type D3

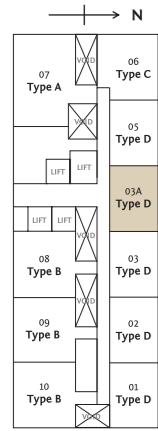


Type D4

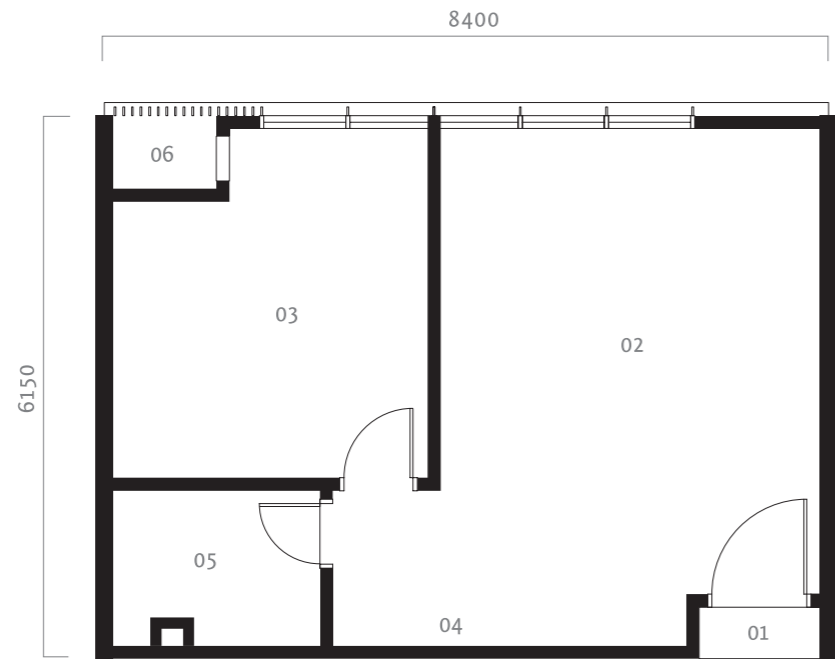
Type D - Layouts above are identical except for location of windows, A/C ledges and entrances.

Type D

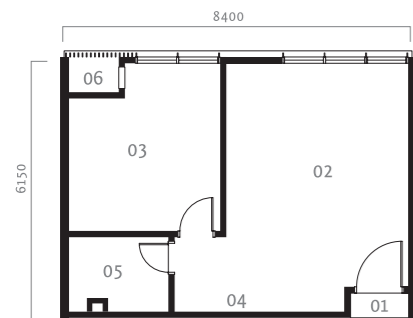
approx built-up
549 sq ft / 51 sm
unit 03A



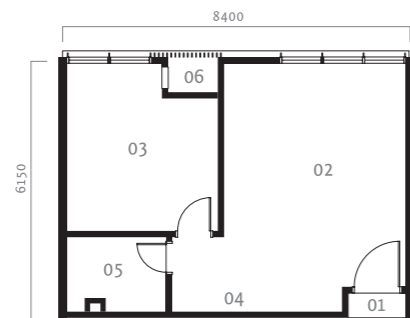
- 01 Entrance
- 02 Office
- 03 Meeting Room
- 04 Pantry
- 05 Toilet
- 06 A/C Ledge



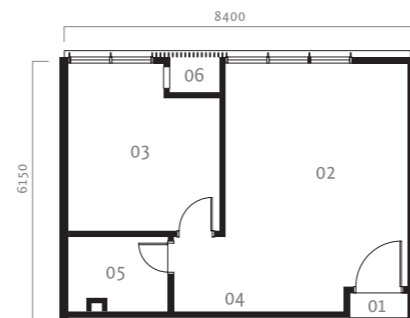
Type D5



Type D6



Type D7



Type D8

Type D - Layouts above are identical except for location of windows, A/C ledges and entrances.

Specifications

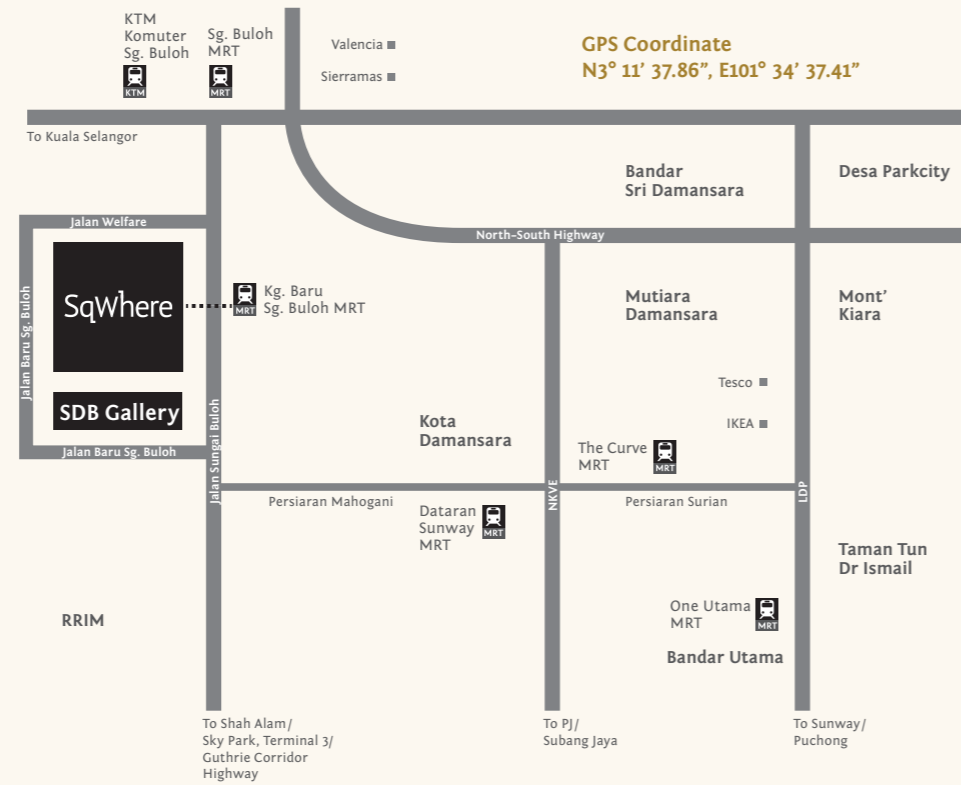
- > STRUCTURE: reinforced concrete
- > WALLS: brick wall / shearwall (whichever is applicable)
- > ROOFING: reinforced concrete roof
- > CEILING:
 - Toilet / Pantry: plaster ceiling & paint
 - Others: skim coat / plaster & paint (whichever is applicable)
- > WINDOWS: aluminium-framed glass window
- > DOORS:
 - Main Entrance: timber fire-rated door / timber door (whichever is applicable)
 - Others: timber door / timber flush door (whichever is applicable)
- > LOCKS: quality lockset
- > FLOOR FINISHES:
 - Office / Manager's Room / Meeting Room: laminated timber flooring
 - Toilet / Pantry / Yard / Entrance: tiles
 - A/C Ledge: cement render
- > WALL FINISHES:
 - Toilet / Pantry: plaster & paint / mosaic tiles
 - Other Areas: plaster & paint

> SANITARY WARES & FITTINGS	Type A	Type B	Type C	Type D
Water Closet	2	1	1	1
Wash Basin	2	1	1	1
Hand-held Shower	2	1	1	1
Kitchen Sink with Tap	1	1	1	1
Bib Tap	2	1	1	1
Toilet Roll Holder	2	1	1	1
Hose Tap	1	-	-	-

> ELECTRICAL INSTALLATION	Type A	Type B	Type C	Type D
Lighting Point	14	10	10	7
Fan Point	3	2	2	2
13amp Plug Point	12	8	8	8
Air-Conditioning Point	4	3	3	2
Water Heater Point	1	1	1	1
Fibre Wall Socket	1	1	1	1
SMATV Point	1	1	1	1
Distribution Board	1	1	1	1
Hob Point	1	1	1	1
Hood Point	1	1	1	1
Audio Intercom	1	1	1	1
Doorbell with Push Button	1	1	1	1

We bring you closer

SqWhere is directly linked to Kampung Baru Sungai Buloh MRT Station, with easy accessibility to major highways, namely NKVE, LDP, MRR2, SPRINT and Guthrie Corridor. Neighbouring this development are some of the best colleges and international schools such as SEGI College, Masterskill College, elc International School and Sri KDU International School, while several commercial hubs are situated around 15 minutes away.



SDB's projects in Malaysia:

Windows on the Park

8.9 acres of parkland surrounding 540 units of condominiums ranging from 916 sq ft – 4,311 sq ft, all with beautiful views

The Hub@SS2

Gardens, rooftop swimming pool, fully-equipped gym, open-air promenade – they all add up to a great place to think, work and connect

Laman & Bayu

A guarded community comprising 72 units of 2-storey and 2½-storey semi-Ds with excellent connectivity located in Puchong South

By The Sea

138 beachfront luxury suites with panoramic views located on Batu Ferringhi, Penang, designed for the global executives

Dedaun

A 38-unit luxury apartment nestled in a secluded corner of Kuala Lumpur City Centre

20trees

A 201-unit mixed development overlooking the world's longest quartz ridge, just 15km from Kuala Lumpur City Centre

20trees West

An exclusive collection of 48 bungalows with private pools sited adjacent to 20trees

Five Stones

A collection of 377 units of low and high-rise condominiums with extensive facilities located in Petaling Jaya

Park Seven

A 105-unit luxury condominium at Persiaran KLCC, 700m from the iconic Petronas Twin Towers

SDB's projects in Singapore:

Village at Pasir Panjang

Most of the 148-unit apartments open up to a 7,000 sq ft three-dimensional lawn

Hijauan On Cavenagh

41 handcrafted low-rise luxury apartments in a coveted green lung, located off Orchard Road

OKIO

An 18-storey stylish contemporary residential and commercial development located on Balestier Road

Gilstead Two

A 34-storey luxury development in the prime Newton locale

Jia@65 Wilkie

An exclusive 7-storey development with only 22 units located just off Orchard Road

Another extraordinary living experience from SDB



The Hub@SS2, Petaling Jaya



Dedaun, Kuala Lumpur



By The Sea, Penang

Incorporated in 1962, Selangor Dredging Berhad (SDB) was, until the 1980's principally involved in tin mining. Today, SDB is positioned as a quality lifestyle company focused on property-related activities. Listed in Bursa Malaysia, SDB owns Wisma Selangor Dredging – a prestigious business address, and Hotel Maya Kuala Lumpur – an award-winning boutique urban resort. Both are within a short walking distance to the iconic Kuala Lumpur City Centre (KLCC).

Today, SDB is a brand that is recognised for its niche luxury developments and innovative designs. SDB has consistently been recognised for its innovation and its excellence by numerous professional bodies such as Singapore Institute of Architects (SIA), Pertubuhan Arkitek Malaysia (PAM), and International Real Estate Federation (FIABCI) for setting new benchmarks in the industry.

SDB is committed to its brand promise of “Driving Excellence, Building Lifelong Relationships”.



Windows on the Park, Cheras

The FIABCI Prix D'Excellence Award 2013 & 2010



The FIABCI Malaysia Property Award 2012 & 2009



The International Star for Leadership in Quality Award 2012



The Asia Responsible Entrepreneurship Award (AREA), South-East Asia 2012



The Asia Pacific International Property Award 2012, 2011 & 2010



The Asia Pacific Entrepreneurship Award (APEA), Malaysia 2012



The Brand Laureate Award 2011-2012 for “Corporate Branding- Best Brands In Real Estate & Property”



South-East Asia Property Awards 2011





Ground Floor, South Block
Wisma Selangor Dredging
142A Jalan Ampang, 50450 Kuala Lumpur
T 603 2711 2288 / F 603 2711 2219

SDB Gallery

+603 6158 0808 / +603 6158 0880

www.sdb.com.my [f /selangordredgingberhad](https://www.facebook.com/selangordredgingberhad)

All information contained herein including visuals, illustrations, specifications, furniture and fittings layout and the presentation of show units are subject to change as may be required by the Developer's consultants and/or relevant authorities and cannot form part of an offer or contract for the sale and purchase of any unit. While every reasonable care has been taken in providing this information, the developer or its agent cannot be held responsible for any inaccuracies. Illustrations and pictures in the printed materials are computer-generated artists' impressions only and are meant to give an approximate idea of the development. All items or plans are subject to variation, modifications, amendments and substitution as may be recommended by the Developer's consultants and/or relevant authorities.

